

6

5

4

3

2

1

0.188

A

B

$\phi 6.360$

49X  $\phi .116 \nabla 1.000$   
 $\checkmark \phi .225 \times 100^\circ$

D

D

C

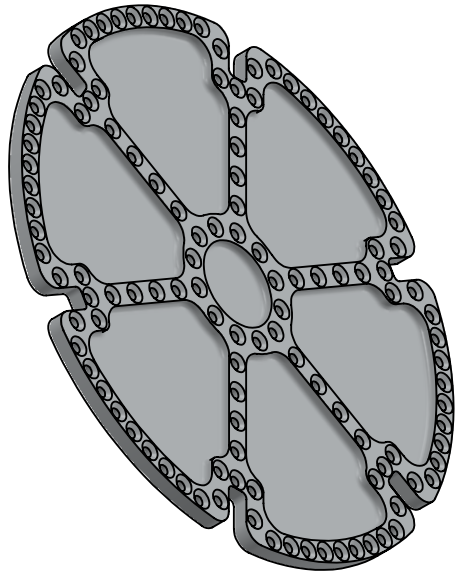
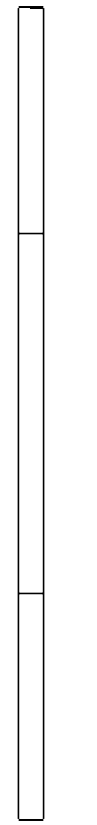
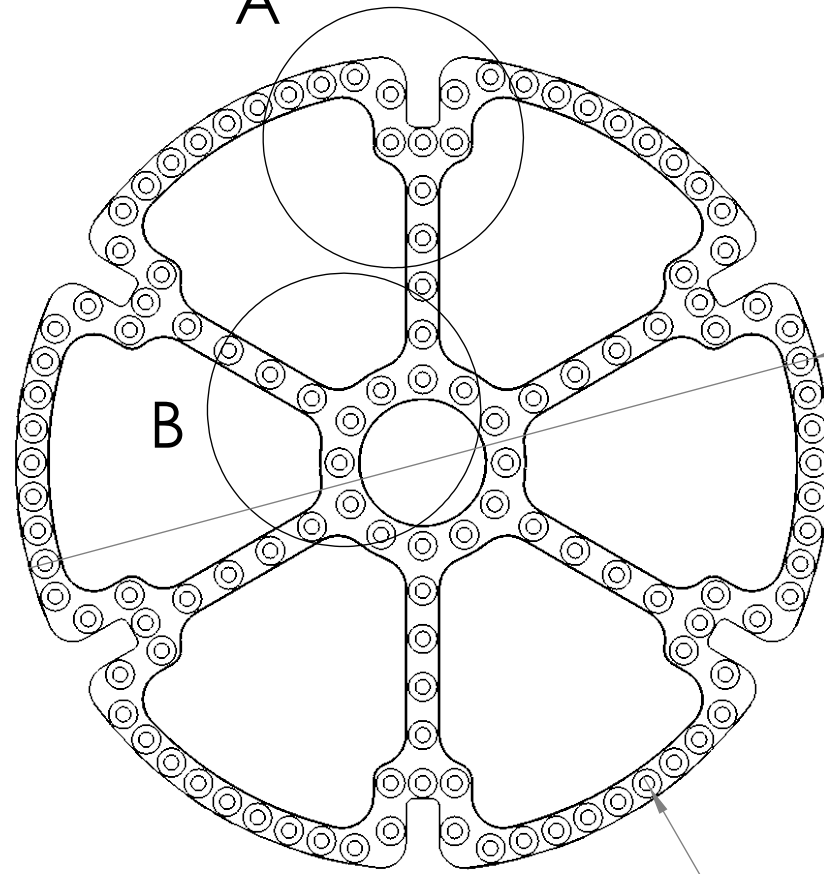
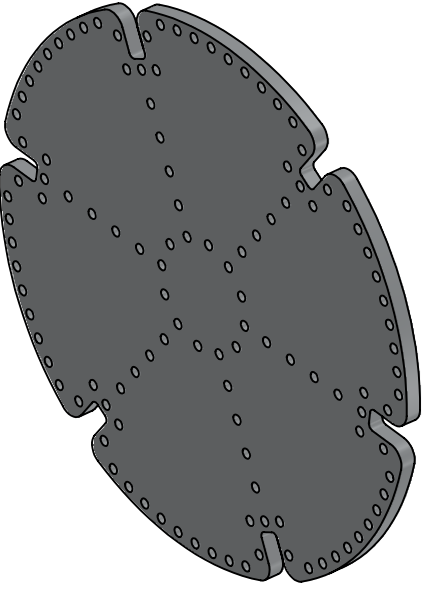
C

B

B

A

A



	NAME	DATE
DRAWN	Joe S.	2/22/2018
CHECKED	--	
ENG APPR.	--	
MFG APPR.	--	

Description:  
bulkhead for the LV3 camera and umbilical rings

UNLESS OTHERWISE SPECIFIED:  
DIMENSIONS ARE IN INCHES  
TOLERANCES:  
FRACTIONS: 1/32  
ANGULAR: MACH  $\pm$  BEND  $\pm$   
TWO PLACE DECIMAL  $\pm$ .01  
THREE PLACE DECIMAL  $\pm$  .001

MATERIAL  
6061-T6 aluminum  
FINISH  
as machined  
Weight  
DO NOT SCALE DRAWING

COMMENTS:  
github.com/psas/lv3.0-camera-ring

DWG. NO.		--
REV	SIZE	SCALE: 2:3
v0.4	<b>A</b>	SHEET 1 OF 3

SOLIDWORKS Educational Product. For Instructional Use Only

6

5

4

3

2

1

6

5

4

3

2

1

D

D

C

C

B

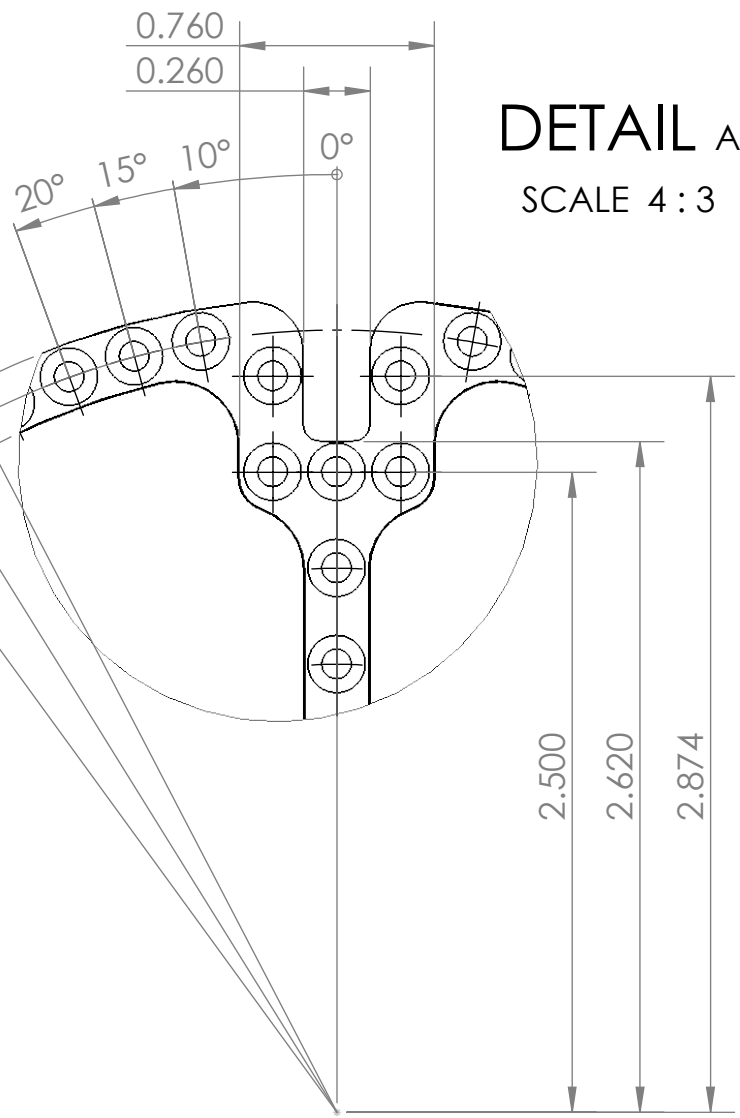
B

A

A

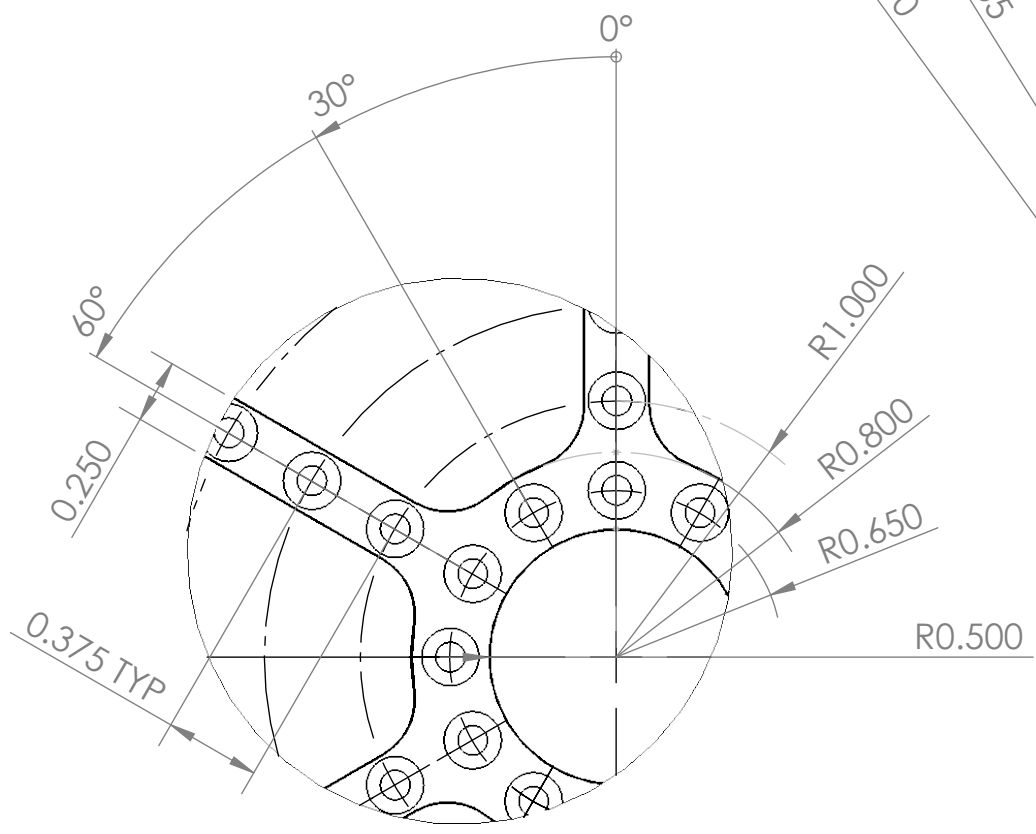
# DETAIL A

SCALE 4:3



# DETAIL B

SCALE 4:3



SOLIDWORKS Educational Product. For Instructional Use Only

UNLESS OTHERWISE SPECIFIED:  
 DIMENSIONS ARE IN INCHES  
 TOLERANCES:  
 FRACTIONS: ± 1/32  
 ANGULAR: MACH ± BEND ±  
 TWO PLACE DECIMAL ±.01  
 THREE PLACE DECIMAL ± .001

	MATERIAL
	FINISH
	Weight
	DO NOT SCALE DRAWING

	NAME	DATE
DRAWN	Joe S.	2/22/2018
CHECKED	--	
ENG APPR.	--	
MFG APPR.	--	

Description:  
 inner hub and bracket  
 mounting

COMMENTS:

DWG. NO.		--
REV	SIZE	SCALE: 2:3
v0.4	<b>A</b>	SHEET 2 OF 3

6

5

4

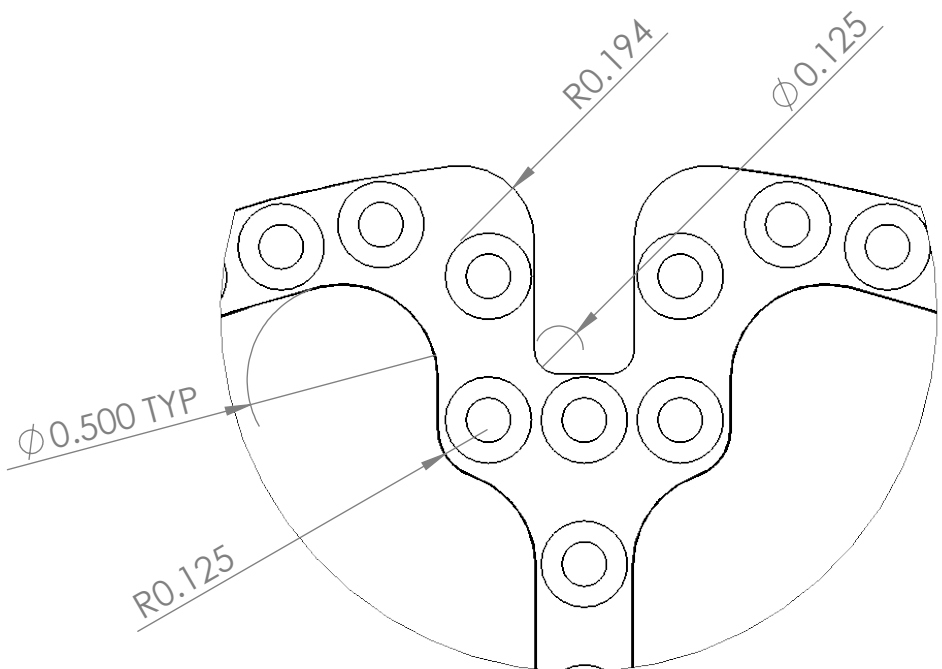
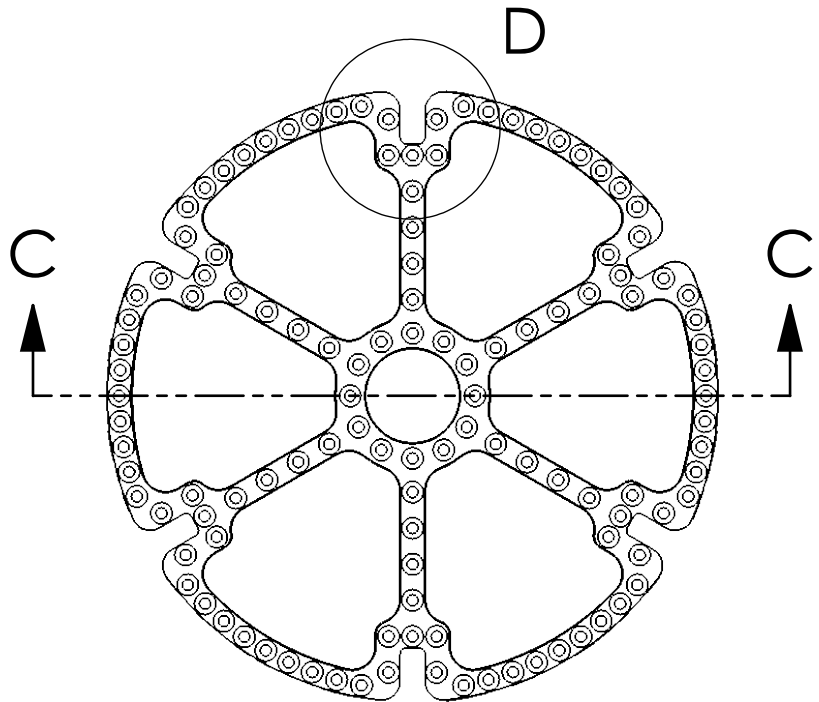
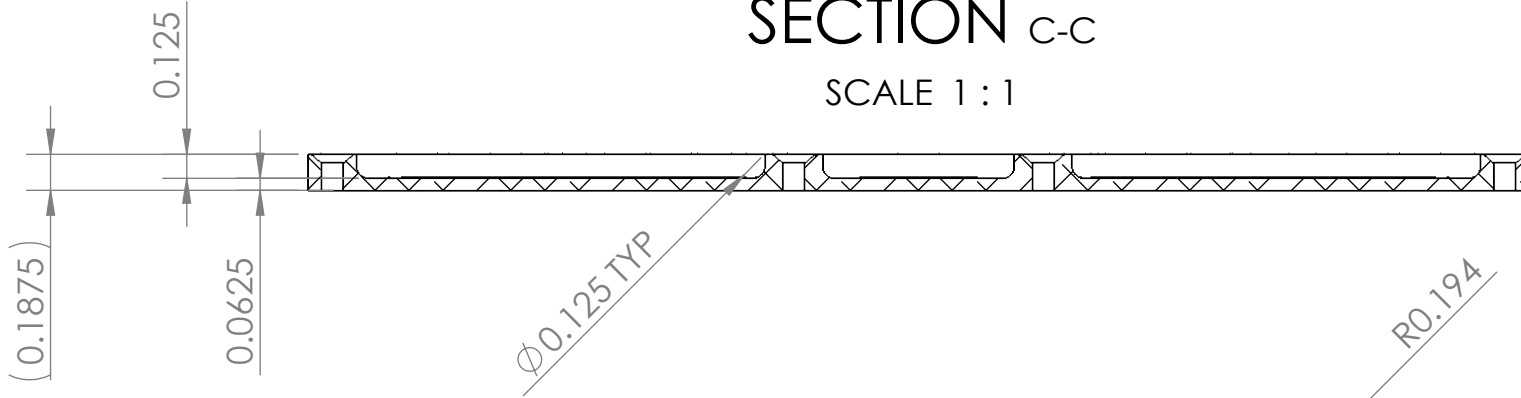
3

2

1

# SECTION C-C

SCALE 1 : 1



## DETAIL D

SCALE 2 : 1

SOLIDWORKS Educational Product. For Instructional Use Only

UNLESS OTHERWISE SPECIFIED:  
 DIMENSIONS ARE IN INCHES  
 TOLERANCES:  
 FRACTIONS: 1/32  
 ANGULAR: MACH ± BEND ±  
 TWO PLACE DECIMAL ±.01  
 THREE PLACE DECIMAL ±.001



	NAME	DATE
DRAWN	Joe S.	2/22/2018
CHECKED	--	
ENG APPR.	--	
MFG APPR.	--	

Description:  
 pocket dimensions and  
 various radii

MATERIAL
FINISH
Weight
DO NOT SCALE DRAWING

COMMENTS:

DWG. NO.		--
REV	SIZE	SCALE: 2:3
v0.4	<b>A</b>	SHEET 3 OF 3