

6 5 4 3 2 1

D

D

C

C

B

B

A

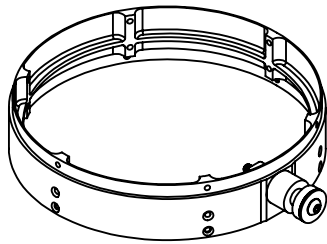
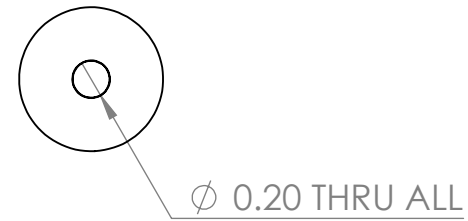
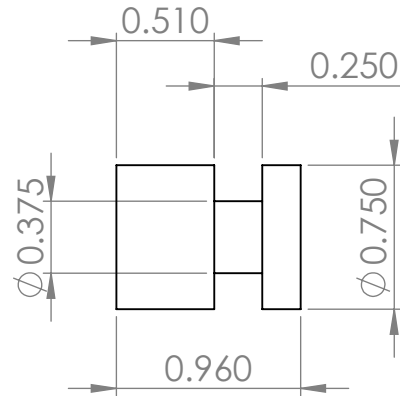
A

UHMW spacer

#10x3/4
washer

neck may optionally
be a PTFE sleeve

#10-24x2
button head
hex bolt



SOLIDWORKS Educational Product. For Instructional Use Only

UNLESS OTHERWISE SPECIFIED:
DIMENSIONS ARE IN INCHES
TOLERANCES:
FRACTIONAL: 1/32
ANGULAR: MACH ± BEND ±
TWO PLACE DECIMAL ±.01
THREE PLACE DECIMAL ±.001

	MATERIAL
	UHMW
	FINISH
	as machined
Weight	
DO NOT SCALE DRAWING	

	NAME	DATE
DRAWN	Joe S.	2018-05-11
CHECKED	--	
ENG APPR.	--	
MFG APPR.	--	

Description:
rail button for LV3

COMMENTS:
Two configurations are possible. The first is a single piece of UHMW. The second is multiple smaller annuluses.

DWG. NO.			--
REV	SIZE	SCALE: 1:1	
i	A	SHEET 1 OF 1	

6 5 4 3 2 1